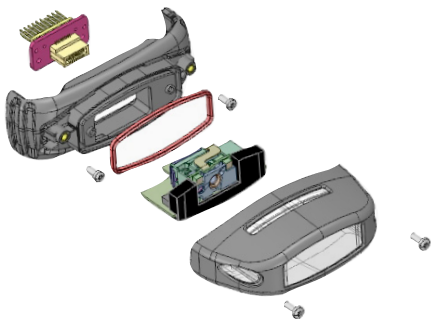


NAUTIZ X8

SCANNER EXPANSION CAP

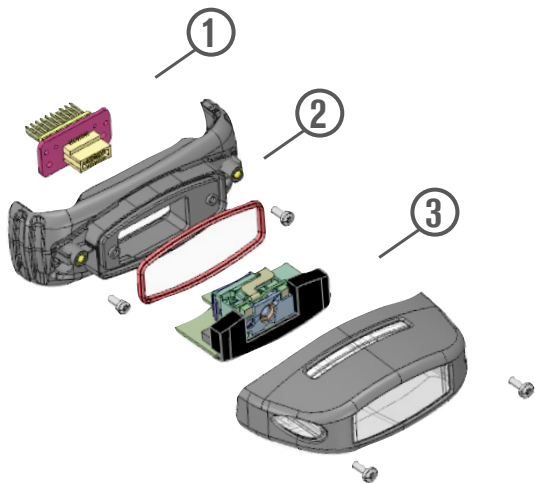
QUICK START GUIDE



handheld

NOTE: Remove the top cap from your Nautiz X8. Keep the screws for step 2.

- ① Connect the card adapter.
- ② Attach the adapter cap onto the Nautiz X8 using the original top screws.
- ③ Connect the expansion cap and fasten with the screws included in the package.



Please go to www.handheldgroup.com/knowledgebase to download more information.

handheld

www.handheldgroup.com